

Design Options for California's Quality Rating Structure

Dennis Vicars, Chair, Design Subcommittee
Consuelo Espinosa, Vice-Chair

CAEL QIS Advisory Committee
August 26, 2010

Design Su Informatio

**These policie
through th**

Action Ite

- □ 5.2.1 Techn
- □ 5.2.2 Samp
- □ 5.2.3 Overs
- □ 5.2.4 CAEL

Informatior

- □ Phase In, in

Action Item 5.

- Approve poli
- QRIS Techn

P

T



P

T



Pr

Te

T



ADDITIO

Assistan

- Build on T, QRIS char
- Prior to im CA and in
- Explore us build a QR leadership.
- TA resourc
 - Quality c learning
 - Operatic fiscal, pe program

ADDITIC

Assistar

- □ Use a cc that enc
- □ Coachin and beg of the E(
- □ QRIS co training i
- □ Statewic coaches
- □ Aspects

ADDITI

Assista

Quality

- Tool fo
- punitiv
- Enable
- More f
- compr
- In earl
- focus &
- contin

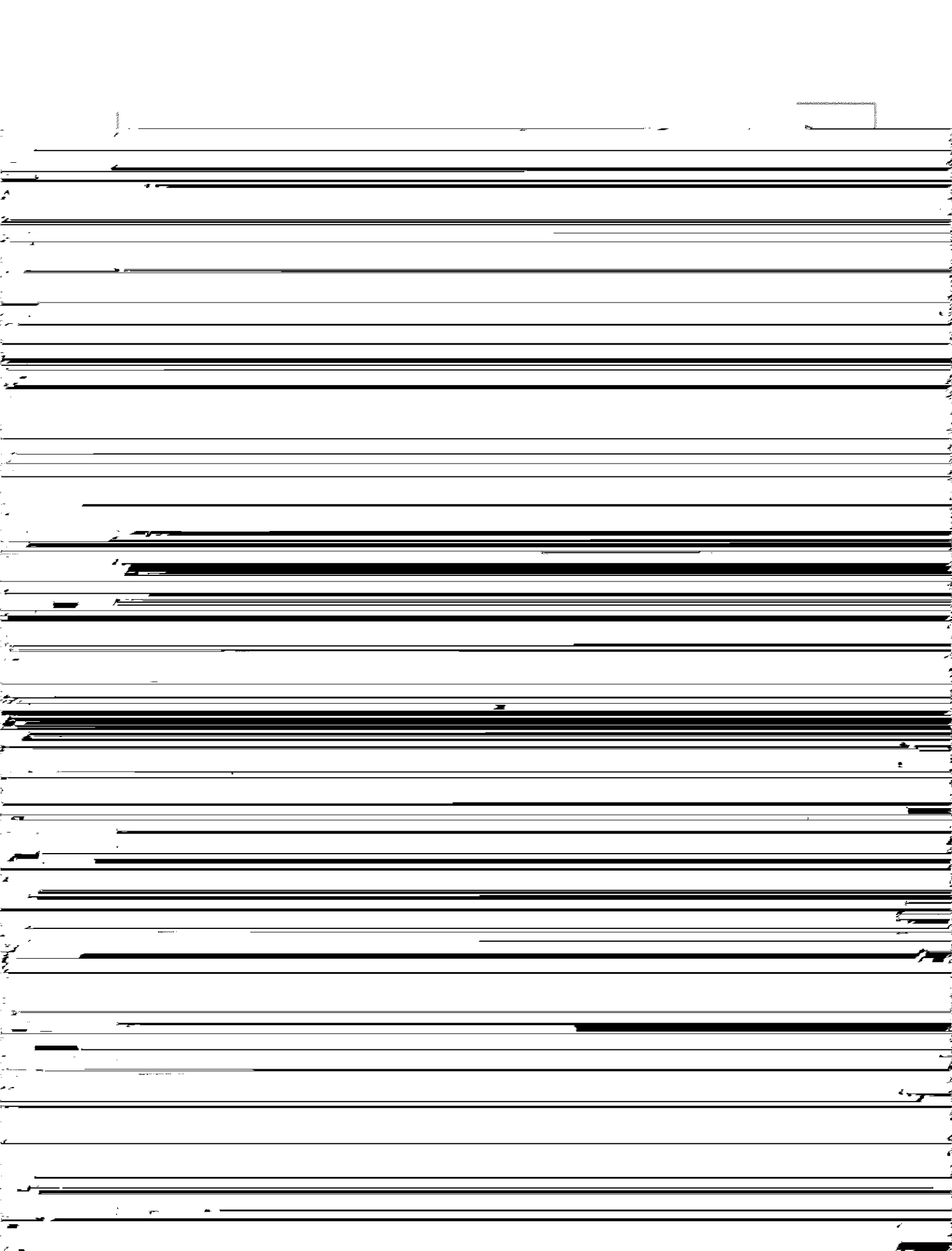
ADDITION

Assistance

- □ Develop pi
statewide
- □ Maximize
teleconfer
- □ Use PITC
resources
- □ Ask LPCs
regional a

Action Item 5.1

- Approve policy
- QRIS Technician



Action

Samp

Evali

deter

Align

exan

multi

same

have

cons

large

Action Item 5.1.2

Sampling Param

- Tiers 1-5 would use Environment Rating FCCH, and for Inf
- Tiers 4 and 5 would be assessed for CLASS alternating rating
- CLASS or PARS professional development improvement plan

Action Item 5.1

■ Approve polic
QRIS Sampli

Action Item 5.1.3: Oversight

- Approve policy statements for CAEL QRIS Oversight

A



Actio

- Estab such :
qualita
ERS)

- Use a
to ma.
QRIS
(or req
provid
consis

Action Item

- Need to safeguard QRIS reviews
Possibly provide not necessarily few agencies regions.
- Review Head monitoring, are
- Further study: child outcome tiers; use data well as for rating

Action Item 5.1.

- Approve policy
- QRIS Oversight

Actic

Parti

App

QIS

V

P

C

□

□

□

T
ir
E
C

10/10/10

10/10/10

10/10/10

10/10/10

10/10/10

10/10/10

10/10/10

10/10/10

10/10/10

10/10/10

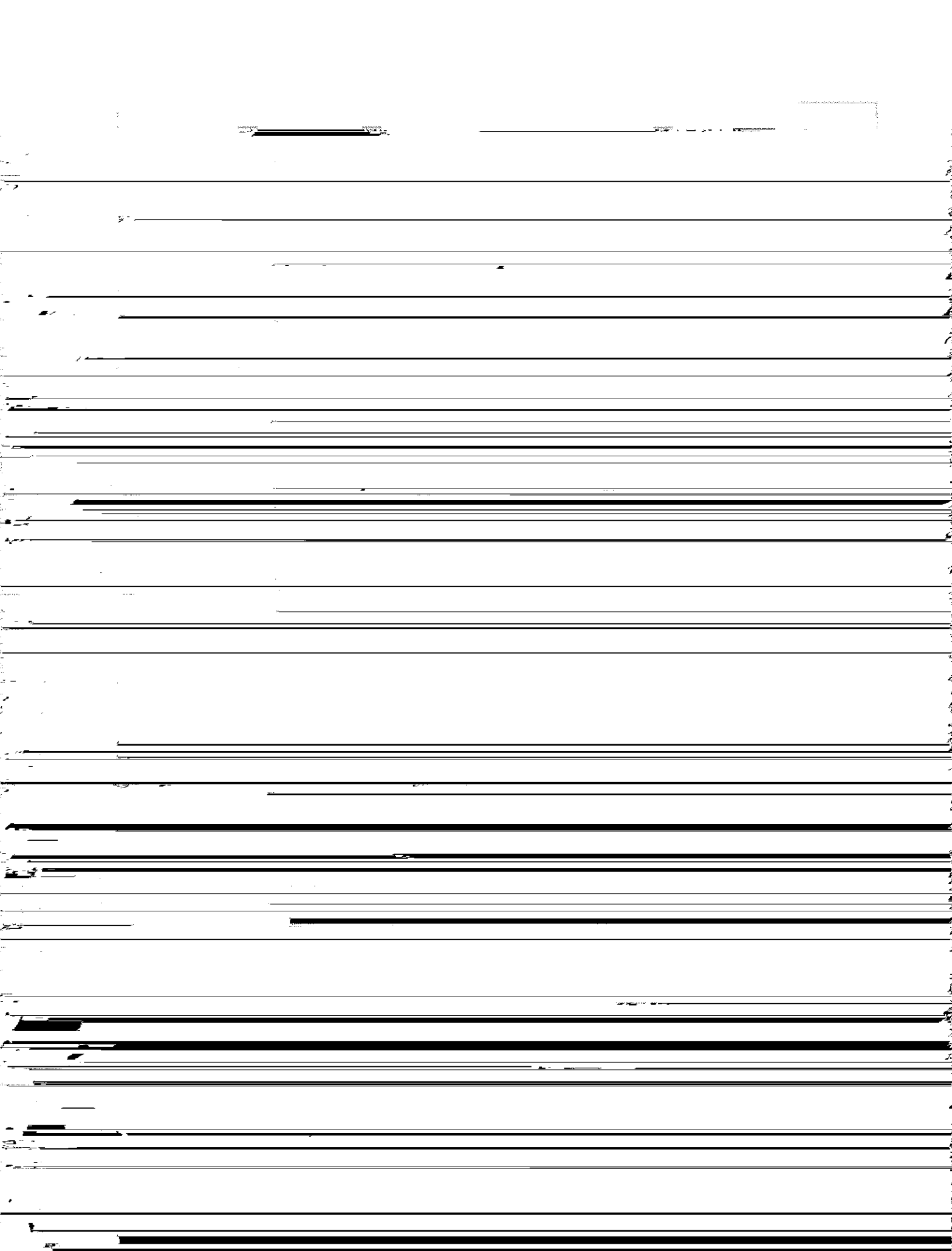
10/10/10

Action Item

**Approve
QIS Par**

5.1.4:

**Policy statements for
Implementation**



Infor

Pilot

Evic

COU

Fi

SU

D€

Ac

Le

ar

De

pr

Information consideration

- QRIS costs are going.
- Data system
- Without state incentives cc
- Partnerships agencies are needs of chil

Questions and Discussion

